

46/197

DRAWING NUMBER

DRAWING NUMBER

DRAWING NUMBER

WATERS REACH AT BOCA WEST PHASE III - P.U.D.

IN PART OF SECTION 9, TWP. 47 S., RGE. 42 E.

PALM BEACH COUNTY, FLORIDA

IN 2 SHEETS SHEET NO. 2

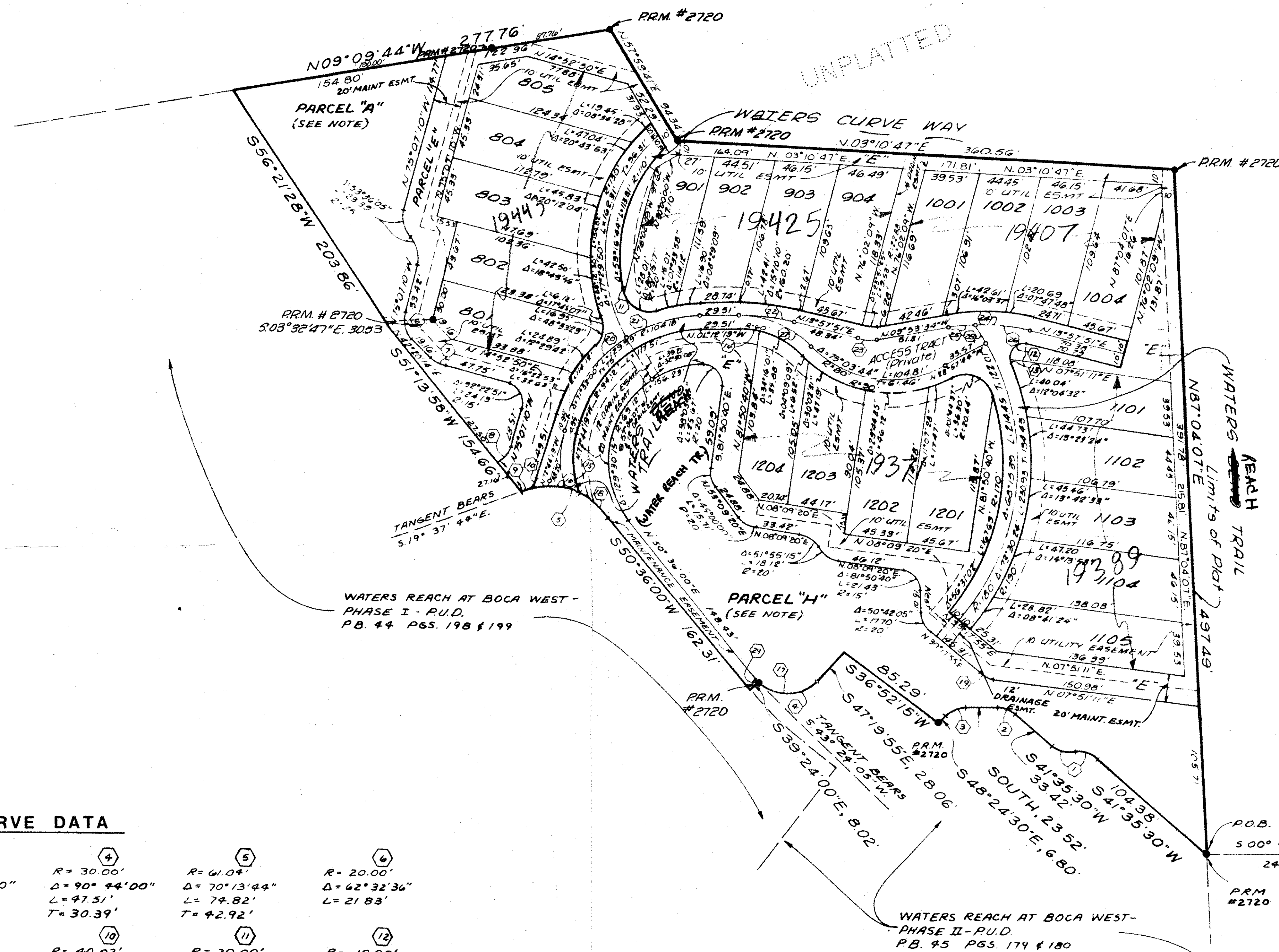
GEE & JENSON
ENGINEERS-ARCHITECTS-PLANNERS, INC.
WEST PALM BEACH, FLORIDA

SEPT. 1983

SCALE IN FEET SCALE: 1"=50'

197

STATE OF FLORIDA
COUNTY OF PALM BEACH
This Plot was filed for record at
M. this day of 1983
and duly recorded in Plat Book No.
on page
JOHN B. DUNKLE, Clerk Circuit Court
By: D.C.



NOTE:
PARCELS "A" AND "H" TO BE MAINTAINED
BY WATERS REACH HOMEOWNERS
ASSOCIATION.

LAND USE	
RESIDENTIAL (22 LOTS)	2.96 AC.±
PARCEL "A"	0.39 AC.±
PARCEL "H"	1.00 AC.±
PARCEL "E"	0.80 AC.±
ACCESS TRACT	0.49 AC.±
TOTAL	5.14 AC.±
DENSITY (22 UNITS)	4.28/ACRES

CURVE DATA

1 R=20.00' Δ=51°55'15" L=18.12' T=9.74'	2 R=20.00' Δ=41°35'30" L=14.52' T=7.60'	3 R=20.00' Δ=48°24'30" L=16.90' T=8.99'	4 R=30.00' Δ=90°44'00" L=47.51' T=30.39'	5 R=61.04' Δ=70°13'44" L=74.82' T=42.92'	6 R=20.00' Δ=62°32'36" L=21.83' T=11.39'
7 R=20.00' Δ=27°27'24" L=9.58'	8 R=20.00' Δ=38°22'04" L=13.39'	9 R=61.04' Δ=06°53'30" L=7.34'	10 R=40.02' Δ=10°30'58" L=7.35'	11 R=20.00' Δ=14°01'10" L=4.89'	12 R=10.00' Δ=111°06'54" L=19.39'
13 R=10.00' Δ=15°44'51" L=2.75'	14 R=40.00' Δ=13°02'18" L=13.65'	15 R=60.00' Δ=39°02'07" L=40.88'	16 R=61.04' Δ=33°19'42" L=35.51'	17 R=30.00' Δ=97°55'55" L=51.28'	18 R=61.04' Δ=30°00'32" L=31.97'
19 R=20.00' Δ=31°26'44" L=10.98'	20 R=104.12' Δ=40°20'26" L=73.31' T=38.25'	21 R=104.12' Δ=31°11'34" L=56.68' T=29.06'	22 R=150.20' Δ=15°10'10" L=39.77' T=20.00'	23 R=32.88' Δ=23°51'25" L=13.70' T=6.95'	24 R=142.01' Δ=23°51'25" L=59.13' T=30.00'
25 R=142.01' Δ=07°21'03" L=18.22' T=9.12'	26 R=142.01' Δ=16°30'22" L=40.91' T=20.60'	27 R=70.00' Δ=47°18'19" L=57.79' T=30.66'	28 R=180.00' Δ=05°14'46" L=16.98' T=8.25'	29 R=30.00' Δ=07°11'55" L=3.77'	

0214-310

Subdivision # 914742

BOOK 416	PAGE 197
FLOOD ZONE B	FLOOD MAP # 2305
QUAD # 53	ZONING
SS	ZIP CODE 33413
PUD NAME	

46/197